

# Date And Batch Printing

## Machine

### Model Yukti 362



**1**  
**YEAR**  
**WARRANTY**

**HIGH**  
*Quality*

CERTIFIED QUALITY MANAGEMENT SYSTEM  
**ISO**  
9001:2015

**HD**  
**HEAVY-DUTY**



# Large character hand-held inkjet

Double nozzle and double ink cartridge

The upper limit of inkjet content is up to 50mm







# HIGH QUALITY INK CARTRIDGE NOZZLE 5CM DOUBLE SPRAY LARGE CHARACTERS

5-50MM HEIGHT ADJUSTABLE,  
PRINTABLE FORM 600DPI HIGH RESOLUTION



# 5CM LARGE FONT INKJET PRINTER

PRINTING HEIGHT UP TO 5CM

4.3-INCH TOUCH SCREEN, MULTI-LANGUAGE, 600DPI HD



# TOUCH EDITING EASY TO USE

CAN BE SPRAYED WITH DOT MATRIX FONTS,  
DATE ENTITIES,  
LOGO BARCODES, QR CODES, SERIAL NUMBERS IMAGE







MECHANICAL PRINTING  
BUTTON HIGH DURABILITY,  
GUARANTEED QUALITY,  
NOT EASY TO BREAK WHEN  
USED IN HIGH FREQUENCY



DOUBLE NOZZLE CODING  
DUAL INK CARTRIDGE CODING  
CODING RANGE 5-50MM, WIDE RANGE  
OF APPLICATIONS, CLEAR CODING





NON-SLIP HANDLE  
ACCORDING TO ERGONOMIC  
DESIGN, IT IS  
CONVENIENT FOR CUSTOMERS  
TO HOLD AND USE



MULTIPLE INTERFACES USB  
IMPORT PICTURE, PHOTOELECTRIC  
INTERFACE CONNECTED TO  
THE SENSOR, PIPELINE USE

# CARTRIDGE

**MULTI-COLOR OPTIONAL**



*Quick dry ink cartridges*

*Unfade*



*Invisible ink can only  
be seen under an ULTRAVIOLET lamp.*

# Equipped with quick-drying non-encrypted ink cartridges



High adhesion, instant drying, clear and beautiful,  
many colors are available





**The body is small and light.**

**It is suitable for long-time hand-held coding, and it is not tired for a long time.**



# QUICK DRY PRINTING STRONG ADHESION

Handheld smart inkjet printer

Mutil core CPU

600DPI HD printing

4.3 inch touch screen





ZK1680

# Intelligent hand-held inkjet

Both hand-held code printing and  
pipeline automatic code printing



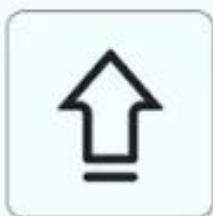


# CONVENIENT PRINTING

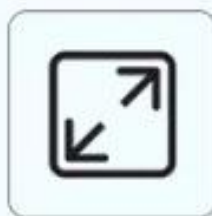
Compact size, multil-language menu, light weight



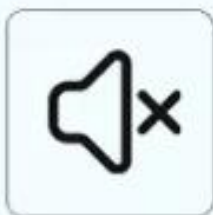
Self storage  
function



HD printing



Touch screen



Silent use



Stable performance



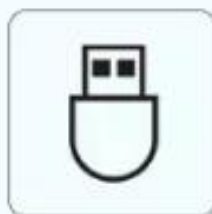
Clear nozzle



Wide application



Touch screen editing



U disk import



Bottom of cans



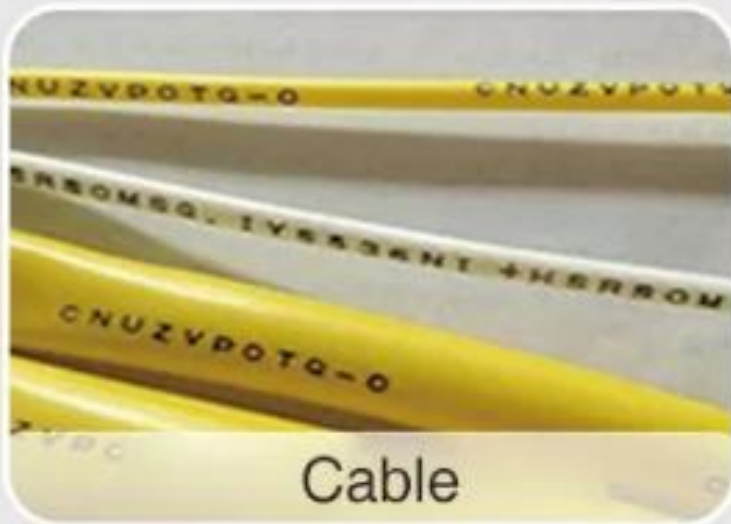
Bottle cap



Box coding



Plastic bag



Cable



Kraft paper

# Coding effect display



Paper



Carton



Pipe



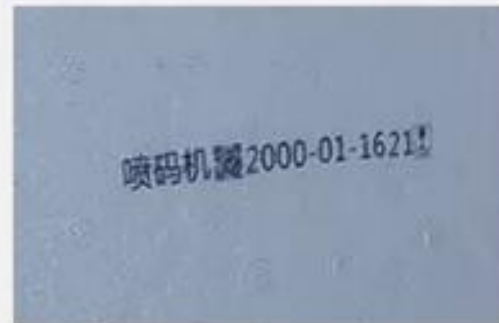
Pearl cotton



Iron plate



PORON



Foam



Board



Plastic bottles



Food bag



Bottle cap



Bottle body



# PRINT CONTENT DIVERSITY

THERE'S A VARIETY OF PRINTS



## DATE COUNT

Production date: 2021/07/23	0001
Validity date: 2022/07/22	
Batch No.2022520B	0002
Production date: 2020/07/20	
Validity date: 2022/07/19	0003

## LOGO

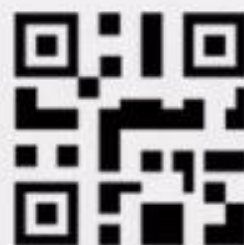


## ALL KINDS OF FONTS

智能喷码机  
ABCDEFGF

202005

## BAR CODE QR CODE



Print content,  
format and number of lines can be customized



CH000011  
CH000012  
CH000013

合格证	
编号:	
检定单位:	
检定日期:	
有效期:	
检定员:	

# DIVERSIFIED PRINTING CONTENT



**QR Code**



**Barcode**



**TXT File**



**Excel File**



**LOGO**

**20221212  
14:22:20**

**Number**



**Line Segment**



**Sheet**



**Dot-Matrix**



# Can be matched with assembly line Realize fully automatic coding

Inkjet printer + conveyor + photoelectric bracket

save time  
and energy

Efficiently  
tell

Convenient



# ORIGINAL INK CARTRIDGE COLOR OPTIONAL



No ink leakage,  
long-lasting, clear and not wiped off



Ink cartridges are available in multiple colors





2018/12/20  
12:20:45



生产日期: 2015.08.23  
生产批号: 021874AG  
有效期至: 2030.02.30





Color Pencil







1

Inkjet nozzle is aligned with the position, then press the print button

2

Print on carton which is pretty awesome



3

A guard to help align your bottle to exactly print the label to the glass bottle

4

Work well on hard and uneven surface





# U DISK INPUT PICTURES

Can directly input QR code, barcode

Input BMP format  
pictures



# BUILT-IN LARGE CAPACITY BATTERY LONG BATTERY LIFE



# CAN BE MATCHED WITH PRODUCTION LINE

## REALIZE AUTOMATIC CODING

Equipped with 4-core CPU + independent research and development system,  
power supply operation



**INDEPENDENT**

Research and development system

**SUPPORT**

The power supply work

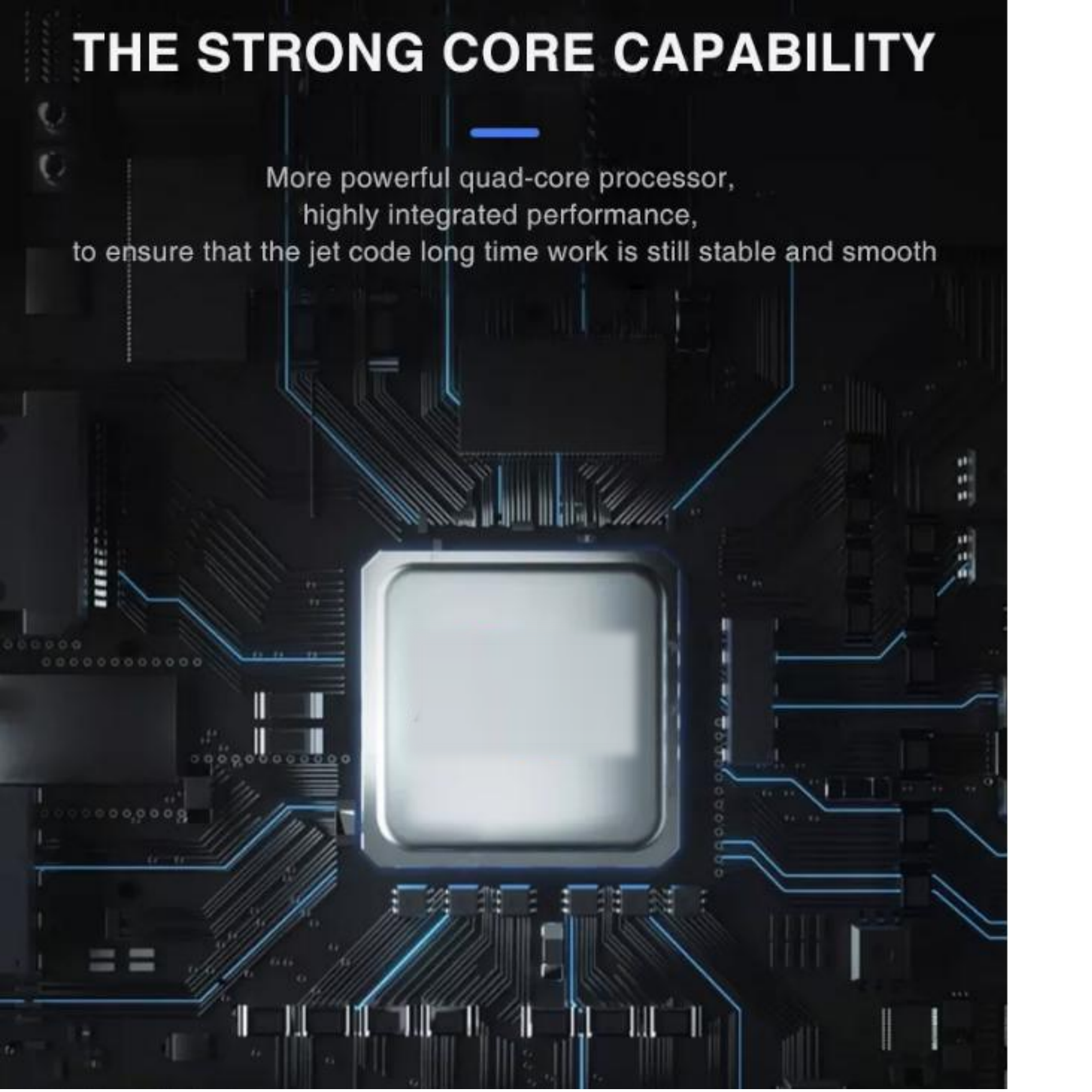
**BOOT**

Replace the ink cartridge

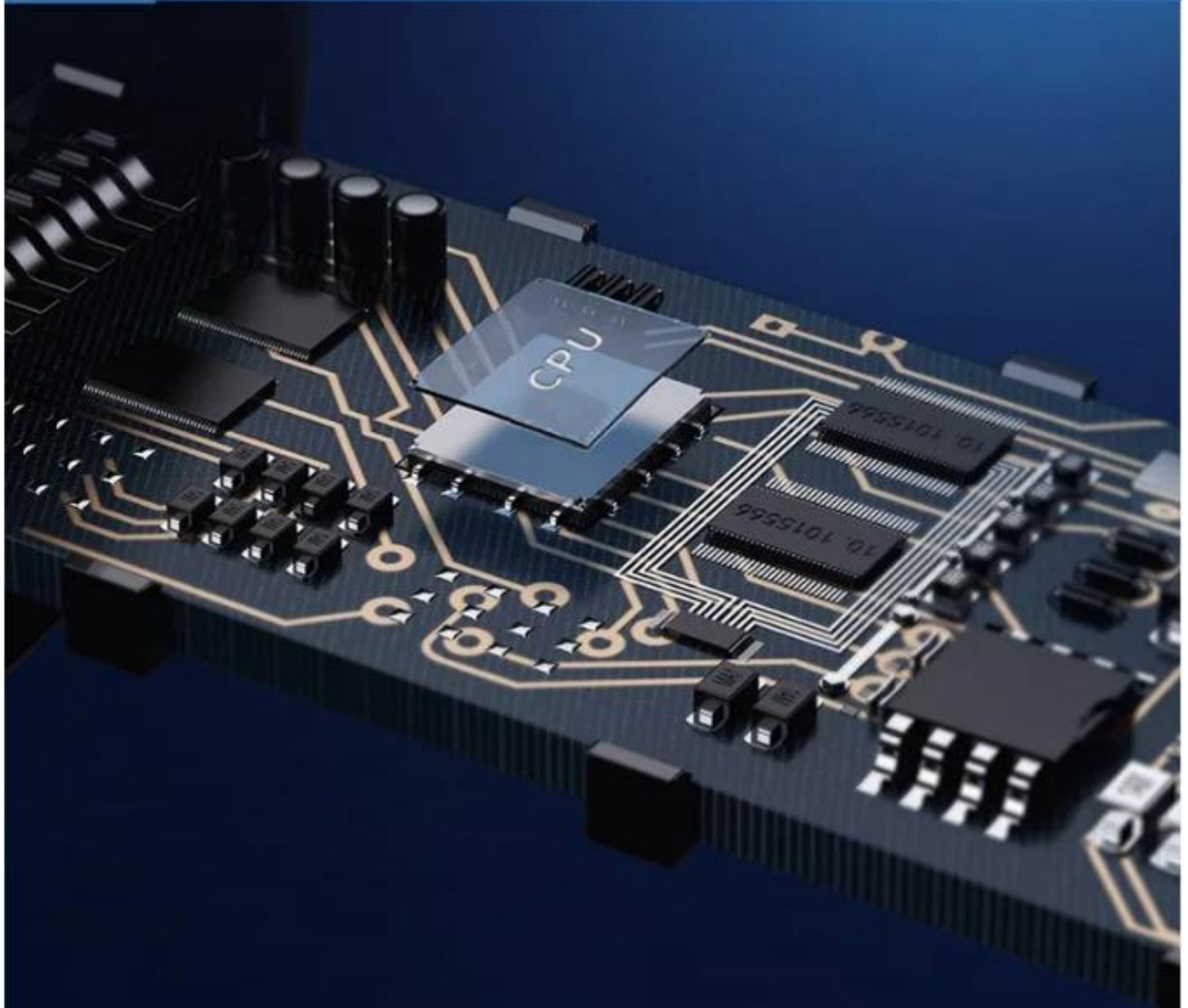


# THE STRONG CORE CAPABILITY

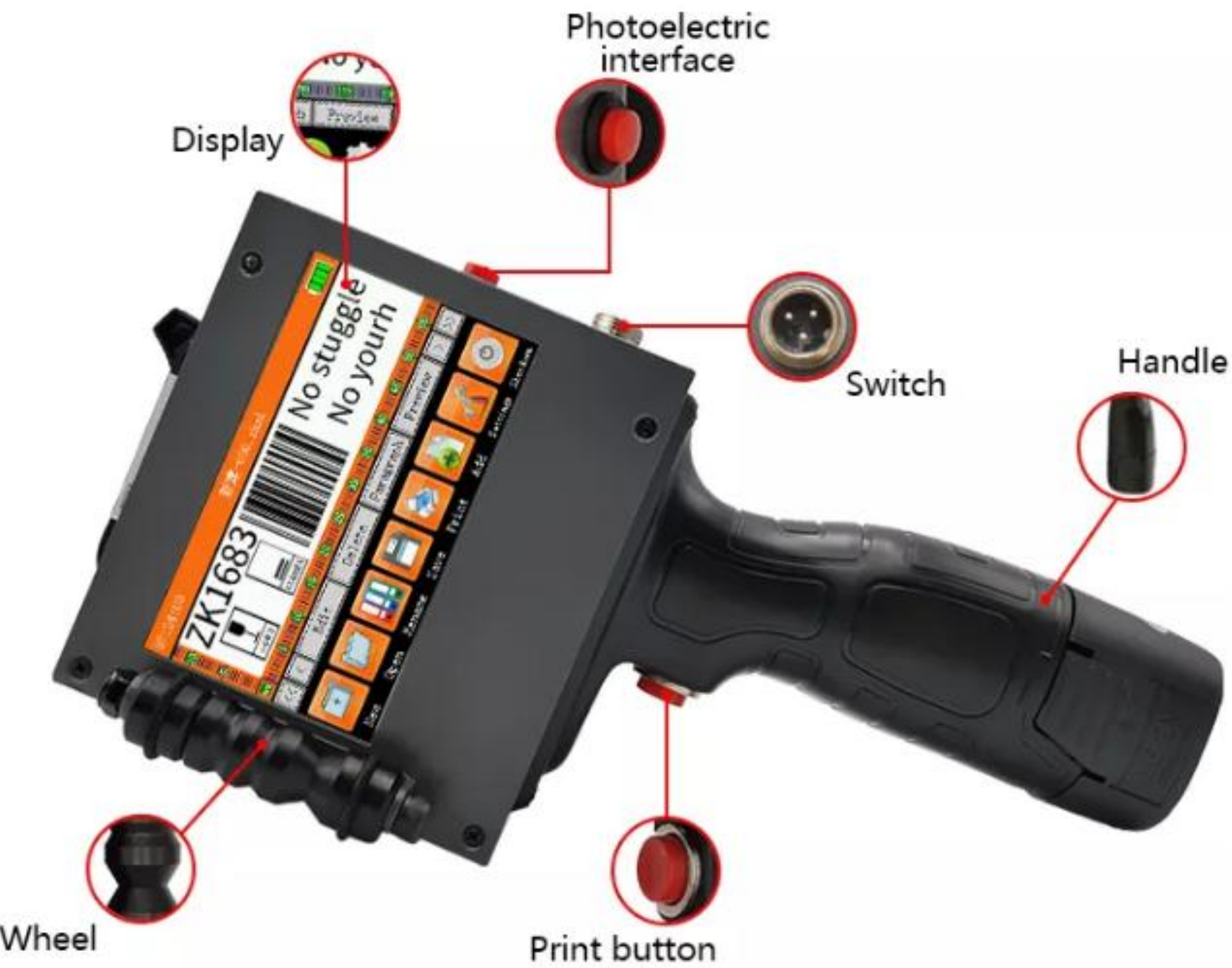
More powerful quad-core processor,  
highly integrated performance,  
to ensure that the jet code long time work is still stable and smooth



**Stable and continuous connection,  
no freeze, more high-definition printing.**







Display

Photoelectric interface

Switch

Handle

Wheel

Print button



# CUSTOM CONTENT

Total height up to 12.7 mm

One line coding

2019/07/10

Two-line coding

2019/07/10

2021/07/11

Three-line coding

2019/07/10

2021/07/11

20190709A

Four-line coding

2019/07/10

2021/07/11

2021/07/11

<b>Function</b>	<b>Description</b>
Warm the low temperature cartridge	Pre-heat the ink cartridge in a low temperature environment of 0 ° C to keep the ink in the best printing state and ensure the stability of the printout.
Six levels of grayscales adjustment	Through precise control of the working voltage and ignition frequency of the ink cartridge, six-level grayscales adjustment is realized to ensure that the printing effect is perfectly presented.
support language customization	This machine supports both Chinese and English. In addition, we can customize a language for customers free of charge. It can support barrier free operation for users all over the world.
Fonts are input independently	User can download font files in ttf, ttc, otf, pfb and other formats by themselves, and input them through U disk.
Wireless keyboard and mouse operation	By connecting a wireless keyboard and mouse to edit the print content, it provides users with a variety of human-computer interaction options.
Serial number output control	Support to print out the serial numbers intelligently after sorting. While improving efficiency, it avoids the risk of misoperations that may be caused by manual input.

# LIST OF PRODUCTS

Original accessories



Cleaning agent



U Disk



Positioning plate



Original ink cartridge



battery



## Technical Details

**Model:-** Yukti 362. **Life:-** Cartridge Can Print 800,000 Characters. **Ink Drying Time:-** 3-5 Seconds. **Printing Speed:-** 70m Per Minute. **Print Head And Material Gap:-** 2 And 5 Mm. **What Can Printer Print:-** print date, time, batch number shift and serial number, Mrp, Expiry Date, bar code, QR Code, manufacturing date, logo, image, table etc. **Print Height:-** 50 Mm. **Print Length:-** Unlimited. **Ink Color:-** Black (other custom). **Voltage:-** 16.8V 2200 mAh lithium battery. **Weight:-** 1kG. **Ink Type:-** Solvent Ink/Water Based Ink 42ml two. **Dimensions (L\*W\*H):-** 120\*250\*135mm. **Color:-** Single Color or two Color. **Plate Type:-** TIJ Printer, Screen Printer. **Usage:-** Paper Printer, Label Printer, Card Printer, Tube Printer, Bag Printer. **Message length:-** 400 characters for each message, no limitation on length. **Printing Precision:-** 300DPI~600DPI. **Control Panel:-** 4.3 Inch Touch Screen. **Data Interface:-** USB2.0. **Shipping:-** All India Free. **Warranty:-** 1 Year. **Service:-** Online.

**Price:-** 130000 Rs + 23400 Rs 18% Gst Total Payable 153400 Rs



Scan To Open Link

**Read More This Machine Visit Below Link:-**

<https://www.topsell.in/batch-mrp-and-expiry-date-printing-machine-price.php>

इस मशीन अधिक जानकारी के लीये नीचे के लिंक को विजिट करे

<https://www.topsell.in/batch-mrp-and-expiry-date-printing-machine-price.php>



Quick Support



# YUKTIRAJ PVT LTD

## ISO Certified Indian Company

# WHY US



Yuktiraj Pvt Ltd Is Will Continue With Technical Force, High Quality Product Performance, Reasonable Price, Thoughtful & Efficient Service. Our Company Stresses On The Experience Accumulation And Technology Research. 365 Days Full Support. Honest And Trustable Company. Responsive Staff. We Keep Trust On Quality And Customer Satisfactions. We are India's leading manufacture and import export company.





# YUKTIRAJ PVT LTD

## ISO Certified Indian Company

**SEND AN INQUIRY**



\*\*\* Company Address \*\*\*

Yuktiraj Pvt. Ltd,

Raje Shambhaji Nagar Kinhi Road Bypass Karanja Lad

District: Washim State: Maharashtra Pin: 444105

*Thank you always with you*

Terms And Conditions :- <https://www.topsell.in/tc>



**WhatsApp**

**9588688034**

**www.**

**[www.topsell.in](http://www.topsell.in)**